

EARLY BRAIN &
BIOLOGICAL
DEVELOPMENT:
A SCIENCE IN
SOCIETY SYMPOSIUM

BUILDING A BETTER SYSTEM

How brain research is supporting education transformation

Keray Henke, Senior Advisor, Alberta Education

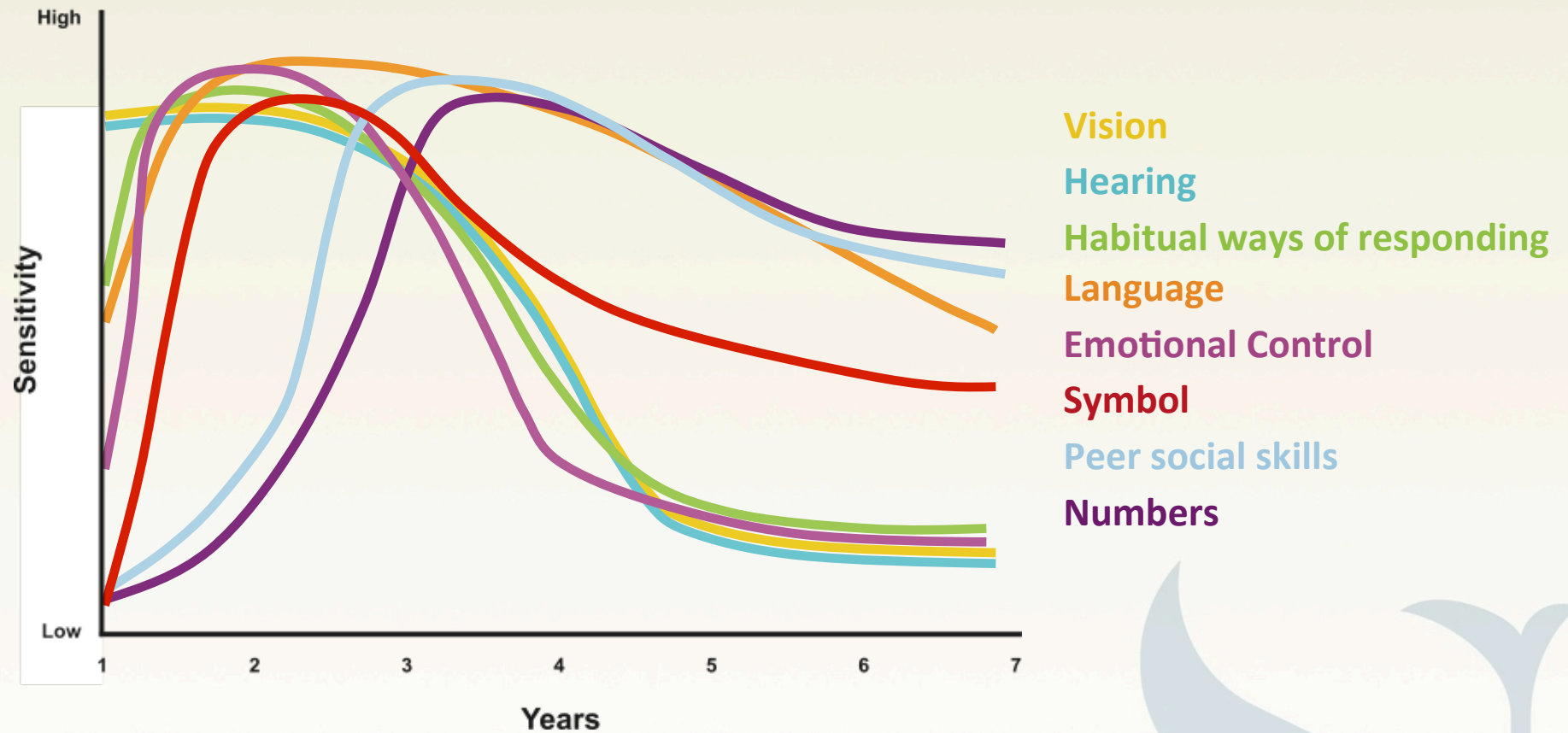


Government's Role in Supporting Student Success

- Policy
 - Inspiring Education
 - Inspiring Action on Education
- Legislation
 - Education Act
- Jurisdictional Leadership
 - Local decision making



Sensitive Periods in Early Brain Development



Graph developed by **Council for Early Child Development** (ref: Nash, 1997; *Early Years Study*, 1999; Shonkoff, 2000.)

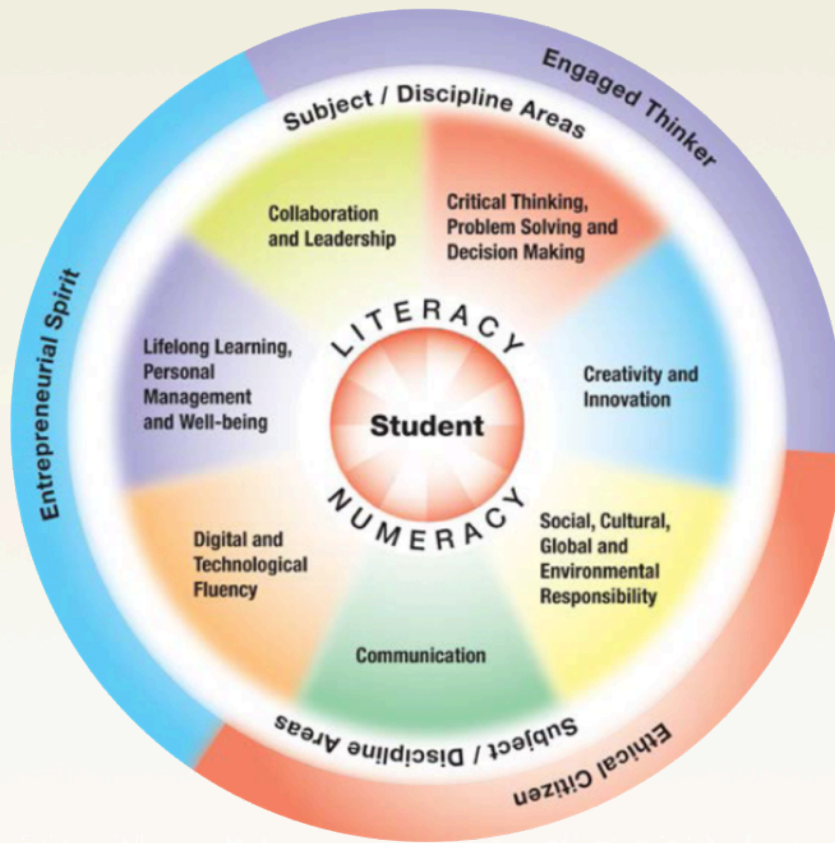
Ages & Stages

- Laddering of curriculum is influenced by brain research
 - Kindergarten
 - Programs of Study
 - Assessment

What's next for the education system?

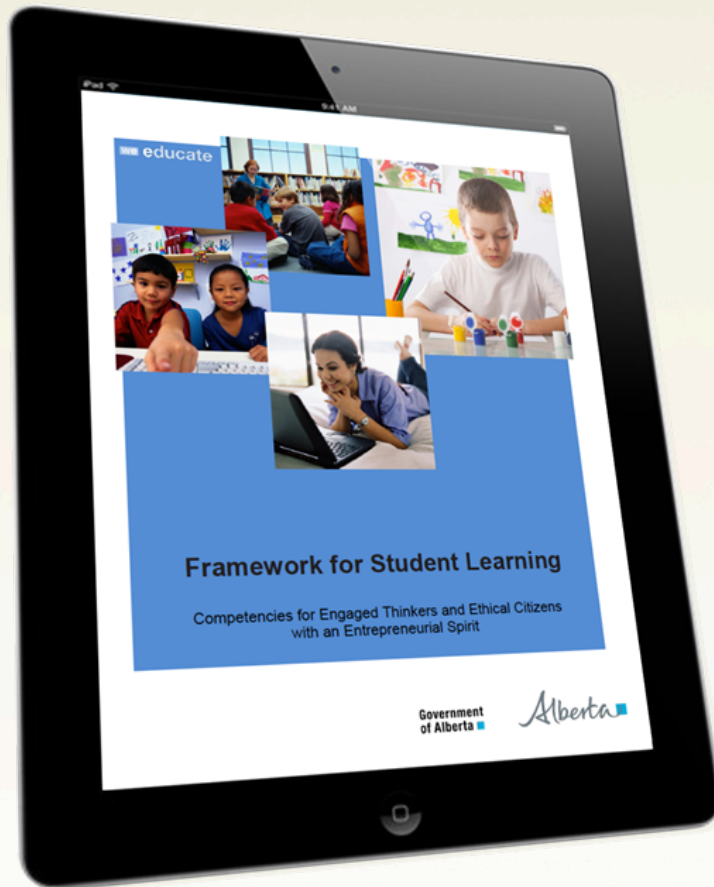


Framework for Student Learning



- Competencies to be central in the education of Alberta's students.
- Based on a foundation of Literacy and Numeracy.

Competencies for Engaged Thinkers and Ethical Citizens with an Entrepreneurial Spirit



- Literacy and Numeracy skills foundational to student learning.
- Competencies embedded in broadly defined learner outcomes.
- Students progress through more complex application of competency development at higher grade levels.

Policy into practice

ECD Mapping Initiative



Policy into practice

High School Flexibility Project

- Exploring high school free of the 25 hours of instruction per credit requirement.
- Accountability that balances learning processes and achievement of learner outcomes.



Policy into practice

Alberta Initiative for School Improvement

- AISI Cycle 5:
 - Research and practice are interconnected.
 - School Community Engagement
 - Collaborative Cross-School Authority Networks



Policy into practice

Inclusive Education

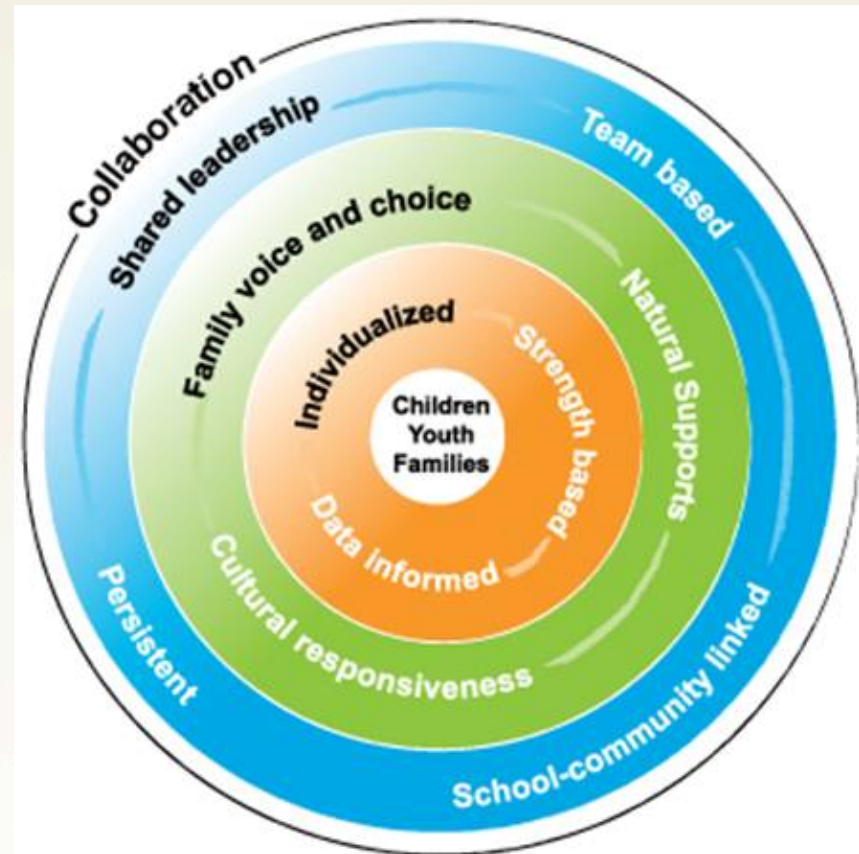
- Diversity
 - Every student is a collage of their abilities and experiences.
- Universal design for learning
 - Welcoming and functional for all students.
 - Rich, flexible environments that are learner focused.



Collaboration

Collaborative Practices and Partnerships

- Caring, Respectful and Safe
- Mentoring
- Provincial Protocol Framework
- Mental Health Capacity Building



Mental Health Capacity Building

Moving Forward

- How can the community of researchers support children, youth and families?
- How do we design, communicate and apply research to support both policy and practitioners?



Alberta 

Questions?

