

A SOCIAL POLICY FRAMEWORK FOR ALBERTA

Shannon Marchand

Assistant Deputy Minister, Social Policy Framework

Ministry of Human Services
Government of Alberta

Presentation Outline

Background: Foundations and Purpose

Work to Date and Research

Drivers

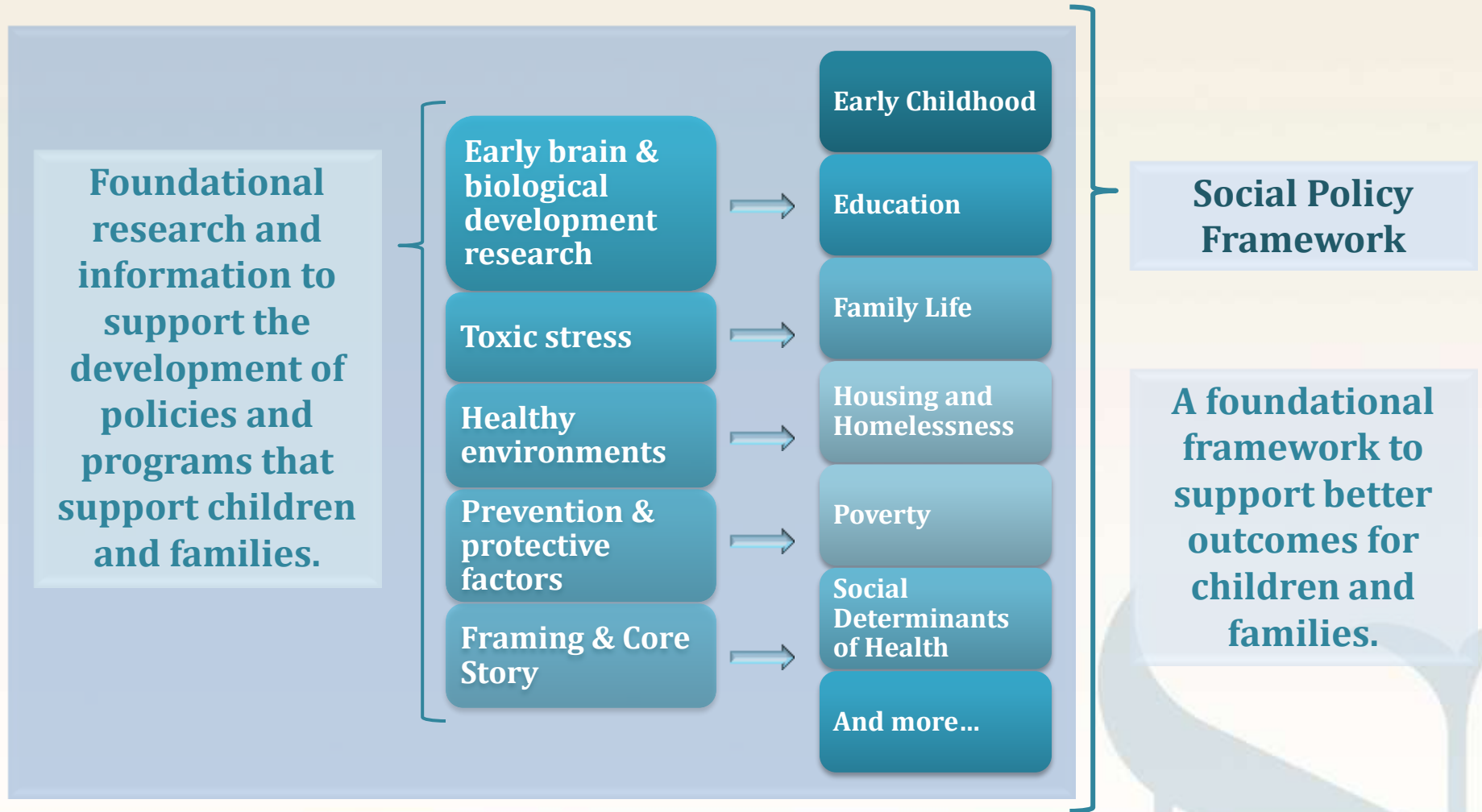
Feedback to Date

Next Steps

A Government Priority

Get Involved!

Foundational Elements



System Transformation

System transformation requires:

a simple policy framework to guide decision-making, program development, and how best to meet the growing and diverse needs of Albertans...

...with a clear vision for the future.



Premier's Mandate

To work with other ministers to develop a social policy framework for Alberta to guide the alignment and redesign of social policy and programs to achieve better outcomes for children and families.

November 3, 2011



What is social policy?

The actions, guidelines, principles, laws, and regulations that influence our development as human beings, our living conditions, and how we respond to human needs.



What is a social policy framework?

A living document that provides broad, overall direction for social policy in Alberta.



Framework Purpose

Give overall direction to planning and decision-making

Develop and communicate a common understanding

Ensure policy consistency and alignment



Work to Date

Research

- Staff Focus Groups & Survey
- Telephone Survey
- Jurisdictional Review: social policy frameworks and poverty reduction plans
- Government of Alberta policy scan
- Best practices
- Scope/policy domains
- Approaches to conceptualizing social policy
- Framing lenses (Centre on the Developing Child core story, FrameWorks Institute)

Engagement

- Engaged approximately 10,000 stakeholders, citizens and staff to gain input on scope, purpose, and outcomes
- Minister-led meetings and Cabinet Tour engagement
- Stakeholder presentations
- Staff Focus Groups
- Online Survey with HS and Seniors staff (ongoing)



**Issue
Identification**



Drivers

Timeline of Social Policy in Alberta

Building and Consolidation

1950 - 1970



Decentralization

1980 - 1990



Fiscal Restraint

1990 - 2000



Legislative Renewal

2000 - 2010



Redesign

2010 - Onwards



- White Paper on Human Resources (Manning)
- Child Welfare Act
- Canada Assistance Plan
- Social Development: A Position Paper (Strom)
- Social Development Act
- School Act

- Caring and Responsibility: A Statement on Social Policy
- Constitution and Charter of Rights
- Decentralization of service delivery
- Trend towards contracting out of services
- Federal government withdraws from social housing

- Accountability Act
- Creation of Social Union Framework Agreements
- Canada Health and Social Transfer
- Welfare reform

- Initiatives focused on specific needs or populations
- Family Supports for Children with Disabilities
- Income and Employment Supports Act
- Child, Youth, Family Enhancement Act

- Homelessness Strategy
- Alberta Supports
- Social Policy Framework

Research



Policy Frameworks

- Canadian and international
- Poverty reduction and inequality
- Social cohesion
- Social mobility
- Creating opportunities



Sector-specific trends and issues

- Early Childhood Education and Development
- Childcare
- Health
- Housing and Homelessness
- More...



Population-specific trends and issues

- Aboriginal Peoples
- Children
- Newcomers
- People with Disabilities
- Seniors
- Youth



Connections

- Government of Alberta
- Municipal
- Provinces and Territories
- Federal
- Think tanks
- Other organizations



Framing

- Norlien's Core Story
- FrameWorks Research
- Poverty Reduction
- Social Determinants of Health

Our Population is Changing



Growing

- Young population
- Interprovincial immigration
- Immigration



Aging

- Health and Caring
- Dependency Ratio
- Sandwich Generation
- Labour market demand



More Diverse

- Growing population, growing needs
- Complexity of needs
- Diversity of opportunities

Our Society is Changing



Rising Cost of Living

- Changing nature of employment
- Demand for skilled labour



Increasing Inequality

- Access to economic resources
- Social cohesion
- Equality of opportunity



Greater Instability

- Globalization
- Economic Integration

We Need Systems that Work for our Future



More pieces need to work together more than before.

- Need for collaboration
- Diversity of needs



It can be hard to find your way.

- System complexity
- Navigation
- Flexibility



Technology is changing how we work and relate.

- Service delivery
- Availability of information
- Accessibility

Feedback to Date

The Social Policy Framework should be:

Transformational

Comprehensive

Preventative

Oriented around Abilities

Evidence-Based

Integrated

The Social Policy Framework should do the following:

Support integrated and coordinated planning

Inform decision-making

Help set priorities

Clarify roles and responsibilities

Define success

Next Steps

Engagement (June – July)

Launch website, social media, wiki, survey (June)

Government-led discussions (June-July)

Community-led discussions (June-July)

Ongoing Activities (June – October)

Continue to inform through presentations and updates on the Internet and Intranet

Draft Framework (August – September)

Drafting (August-September)

Finalization (October)

Opportunities for Engagement



In-Person Discussions



Website:

<http://humanservices.alberta.ca/socialpolicy>



Email :

hs.socialpolicy@gov.ab.ca



Social Media



Wiki



A Priority Initiative

Senior Leadership

- Premier and Cabinet
- Deputy Ministers (cross-ministry)
- Assistant Deputy Ministers (cross-ministry)

Human Services and Cross-Ministry

- Presentations
- Focus Groups and Surveys
- Internal networks
- Delivery

External Stakeholders

- Engagement
- Researchers
- Community leaders
- Non-profit groups

Thank You

