
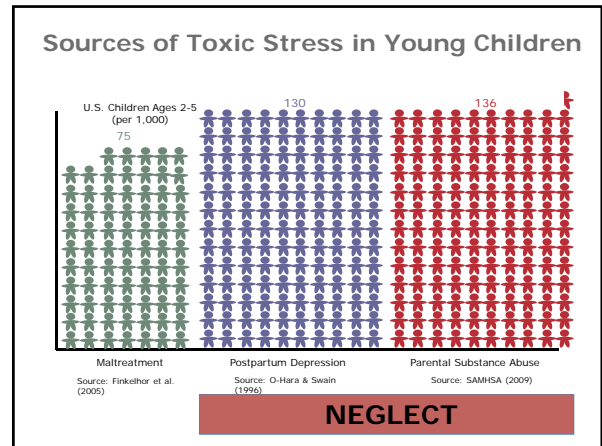


*Accelerating Innovation:
Telling the Brain Story to Inspire Action*

Intergenerational Effects of Poor Parenting

Judy L. Cameron, PhD
Department of Psychiatry, University of Pittsburgh

The National Scientific Council
on the Developing Child

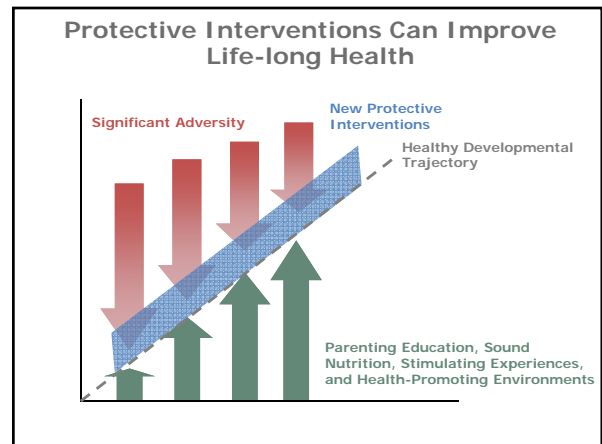
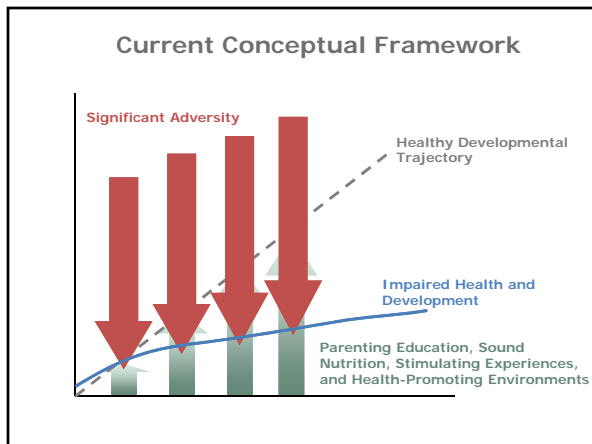
How does neglect impact the brain?

- 1** *Brain Architecture* Is Shaped by Early Life Stresses
- 2** *Gene Expression in the Brain* Changes in Response to Stress Exposure
- 3** *Hormone Secretion* Changes in Response to Stress Exposure
- 4** Early Stresses Change the *Way You See the World*

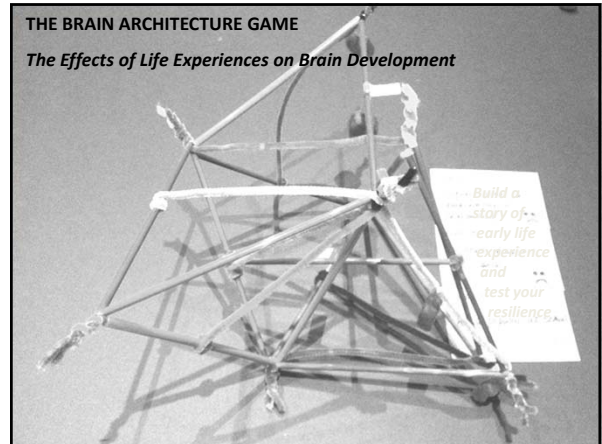
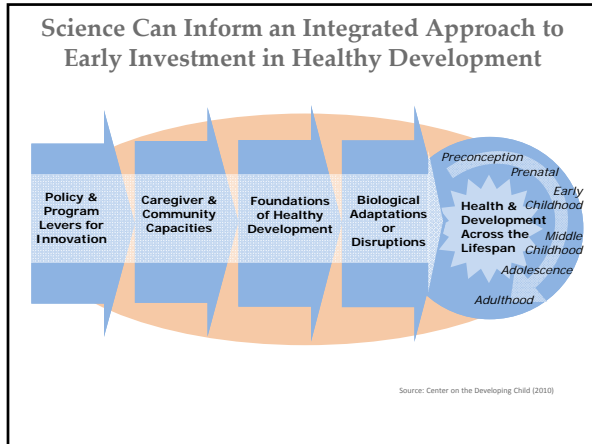
Accelerating Innovation: Telling the Brain Story to Inspire Action



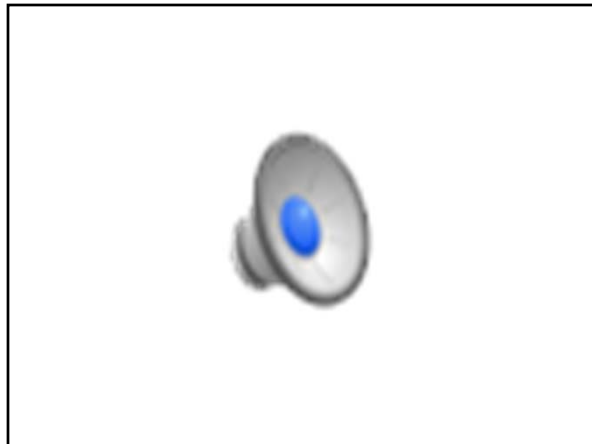
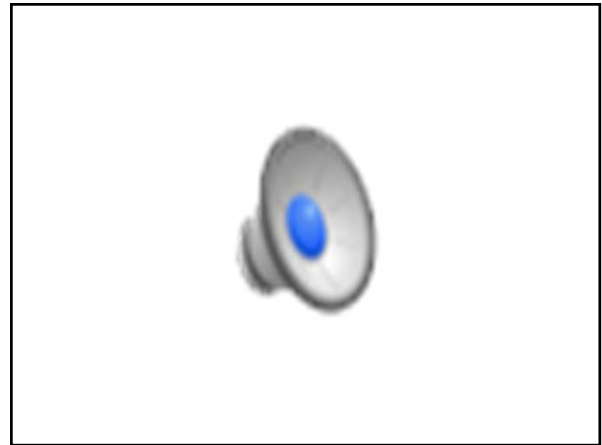
- How can communities provide children with stable, caring relationships?
 - *Strengthening family relationships*
 - *Providing other relationships*
- How can interventions be provided early?
- How to get the community involved?



*This presentation may differ from what is presented during the session as the hand-outs were printed ahead of time.



**Policy Makers, Health Care Providers,
Train-the-Trainers**



*This presentation may differ from what is presented during the session as the hand-outs were printed ahead of time.

We Need To Develop *New Programs*
And *New Tools* For Training Those
Who Work Directly With Children



Generations Together: A program and tools



- Senior Citizens Provide the Manpower to Increase *Serve-and-Return* Interactions
- Youth Provide *Near-Peer Connections with Children*, Technology Know-How, A Comprehensive Community Approach
- Focus on *Language Skills, Problem Solving Skills, Conflict Resolution Skills*

Dino Hunter



Dino Hunter Timeline

205 MYA - 146 MYA
147 - 65 MYA

Triassic Jurassic Cretaceous

Mesozoic Era

Building Brains: A Community Effort

- *How do we translate the brain science? Neuroscientists working with the creative community*

Building Brains: A Community Effort

- *How do we translate the brain science? Neuroscientists working with the creative community*
- *How can we engage the whole community? Work with established community organizations*

*This presentation may differ from what is presented during the session as the hand-outs were printed ahead of time.

Building Brains: A Community Effort

- *How do we translate the brain science?
Neuroscientists working with the creative
community*
- *How can we engage the whole community?
Work with established community
organizations*
- *How improve life for all children?
Be everywhere! Include everyone!*